

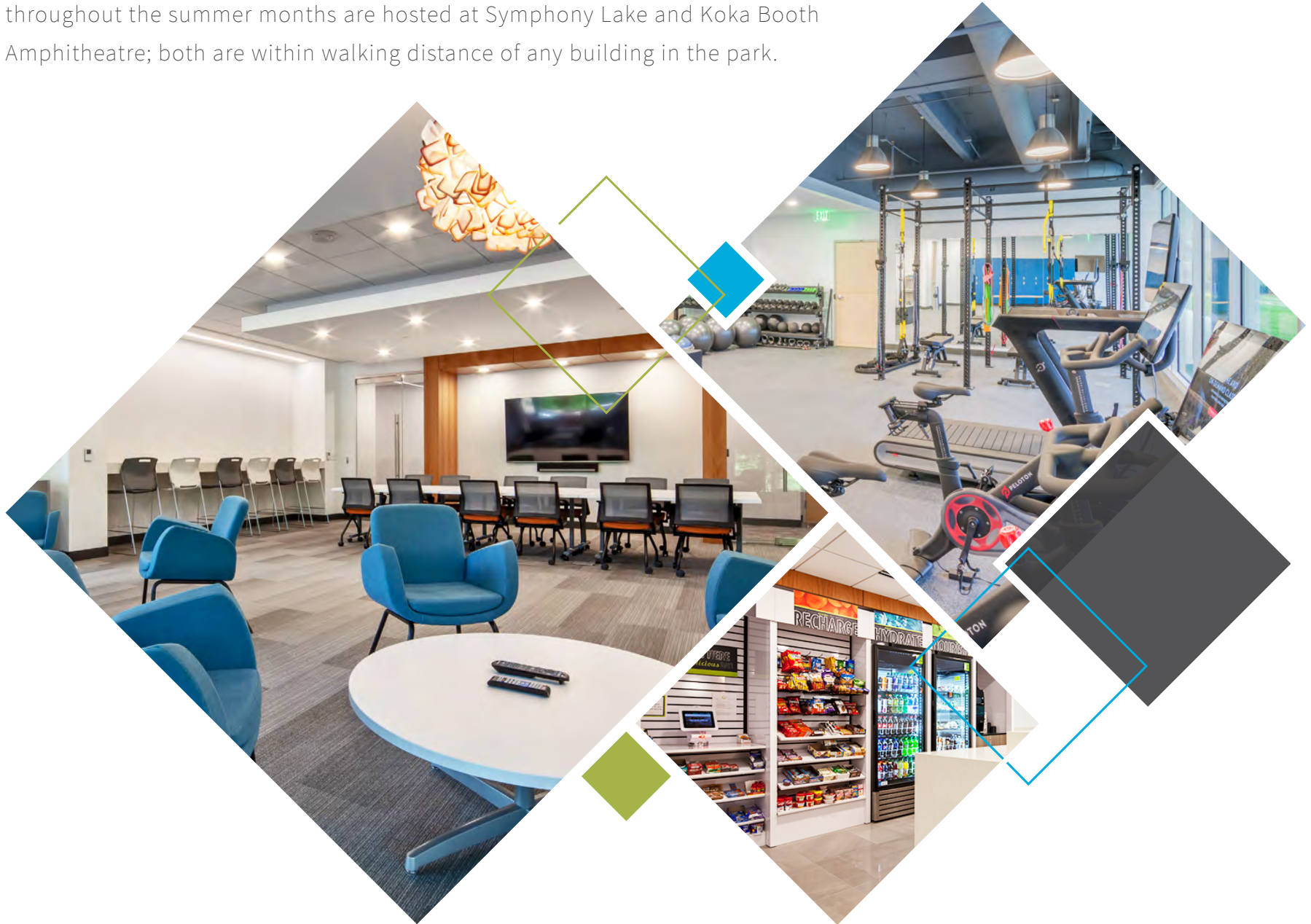
**1,597 - 24,879 SF**  
**OF CLASS A OFFICE SPACE AVAILABLE**

**8000 REGENCY PARKWAY, CARY, NC 27518**



## REGENCY PARKWAY

Located just off US-1, US-64, and I-440, Regency Parkway has access to wooded walking and biking trails in Hemlock Bluffs Nature Preserve, Lochmere Park, and the Symphony Lake and Swift Creek Greenways. Concerts and movie nights throughout the summer months are hosted at Symphony Lake and Koka Booth Amphitheatre; both are within walking distance of any building in the park.



## KOKA BOOTH AMPHITHEATRE

Koka Booth Amphitheatre provides an abundance of events for the Triangle area including Summerfest with the North Carolina Symphony, Movies by Moonlight with WakeMed, assorted music series, races, and more. With over 60 events just between April-October, Koka Booth is an important staple to the Cary area. Positioned in a 14-acre wooded area next to Symphony Lake, the Amphitheatre has a capacity of 7,000 people with options to sit on the open lawn or the Crescent Deck.



## SWIFT CREEK GREENWAY

Running along the northern border of the Hemlock Bluffs Nature Preserve, the 1.2 mile trail, including the asphalt, was created completely of recycled materials, making it the first greenway of its kind in the nation. On a walk through the Swift Creek Greenway, you will pass by Ritter Park where the main trailhead is located. The greenway is open from dawn to dusk so there is plenty of time for walking, running, biking, and more.



## 8000 REGENCY PARKWAY

The 8000 Building at Regency Parkway has peaceful wooded views through the floor to ceiling glass that allows for natural light to flood the office space. Tenants situated on the upper floors will have beautiful views of Symphony Lake across the street. With immediate access to the Symphony Lake Greenway, tenants have the opportunity to run, walk or bike throughout the park.

8000 Regency offers a robust amenity package for tenants, creating a modern and refreshing work setting perfect for companies looking for a collaborative environment. The common area amenities include a social hub with a fresh vending café, The Nest (conference center), fitness center with showers and lockers and an outdoor patio with ample seating featuring a putting green. Extensive renovations to the lobby, restrooms, common corridors, exterior façade and signage have just been completed.



**PROPERTY TYPE** Class A Office

**BUILDING SIZE** 144,876 SF

**FLOORS** Six (6)

**LEASING RATE** \$27.50

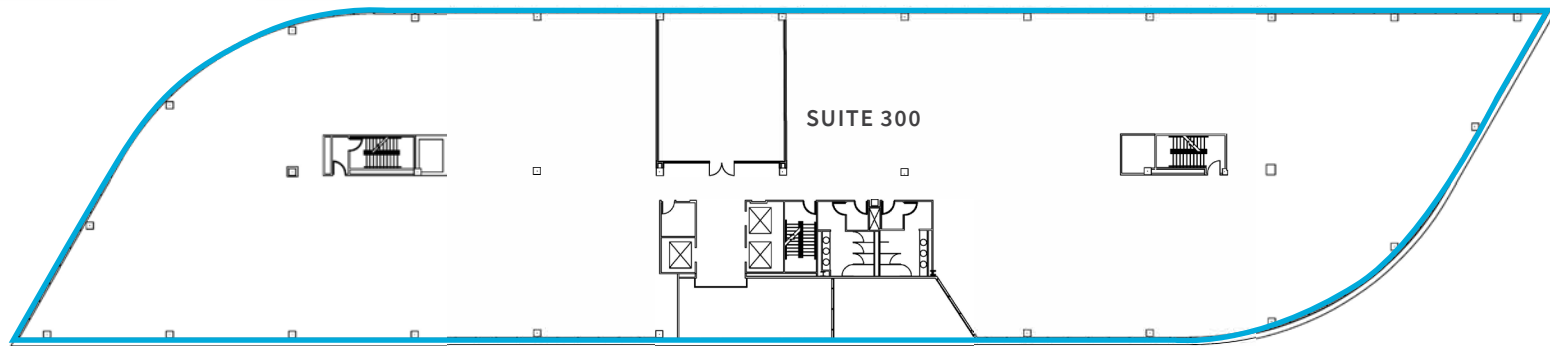
**PARKING** 4.0/1,000

**AVAILABILITY** Suite 140: 1,886 SF  
Suite 300: 24,879 SF  
Suite 400: 2,896 SF  
Suite 408/410: 3,768 SF  
Suite 570: 1,597 SF  
Suite 675: 7,182 SF



## FIRST FLOOR

SUITE 140: 1,886 SF

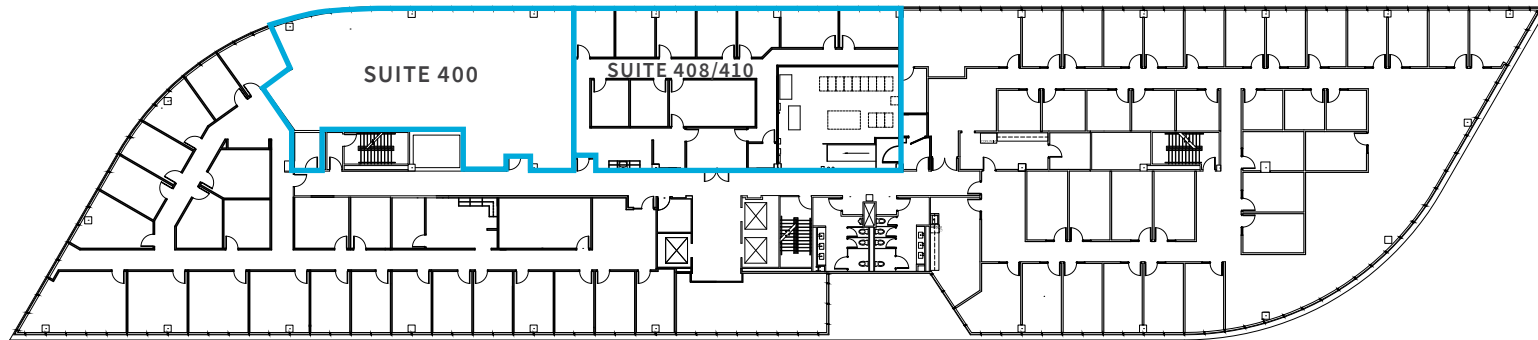


## THIRD FLOOR

SUITE 300: 24,879 SF (CAN BE SUBDIVIDED)



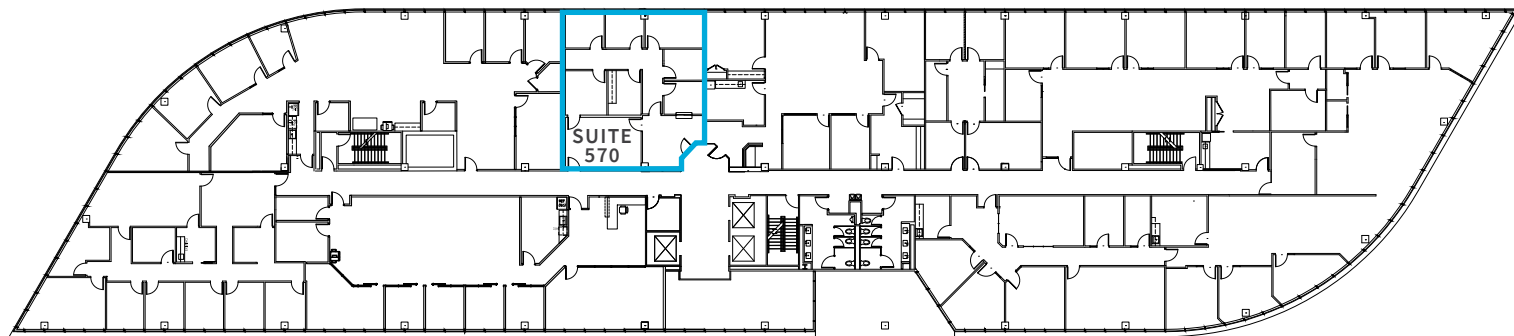
SUITES 400 & 408/410 CAN BE COMBINED FOR 6,664 SF



## FOURTH FLOOR

SUITE 400: 2,896 SF

SUITE 408/410: 3,768 SF



## FIFTH FLOOR

SUITE 570: 1,597 SF



HOME

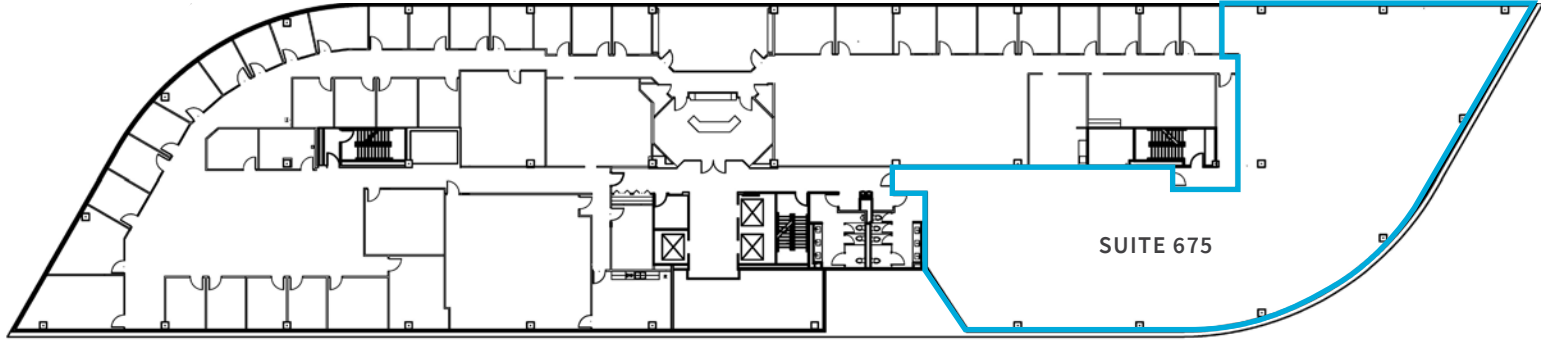
DETAILS

FLOOR PLANS

MAP

CARY

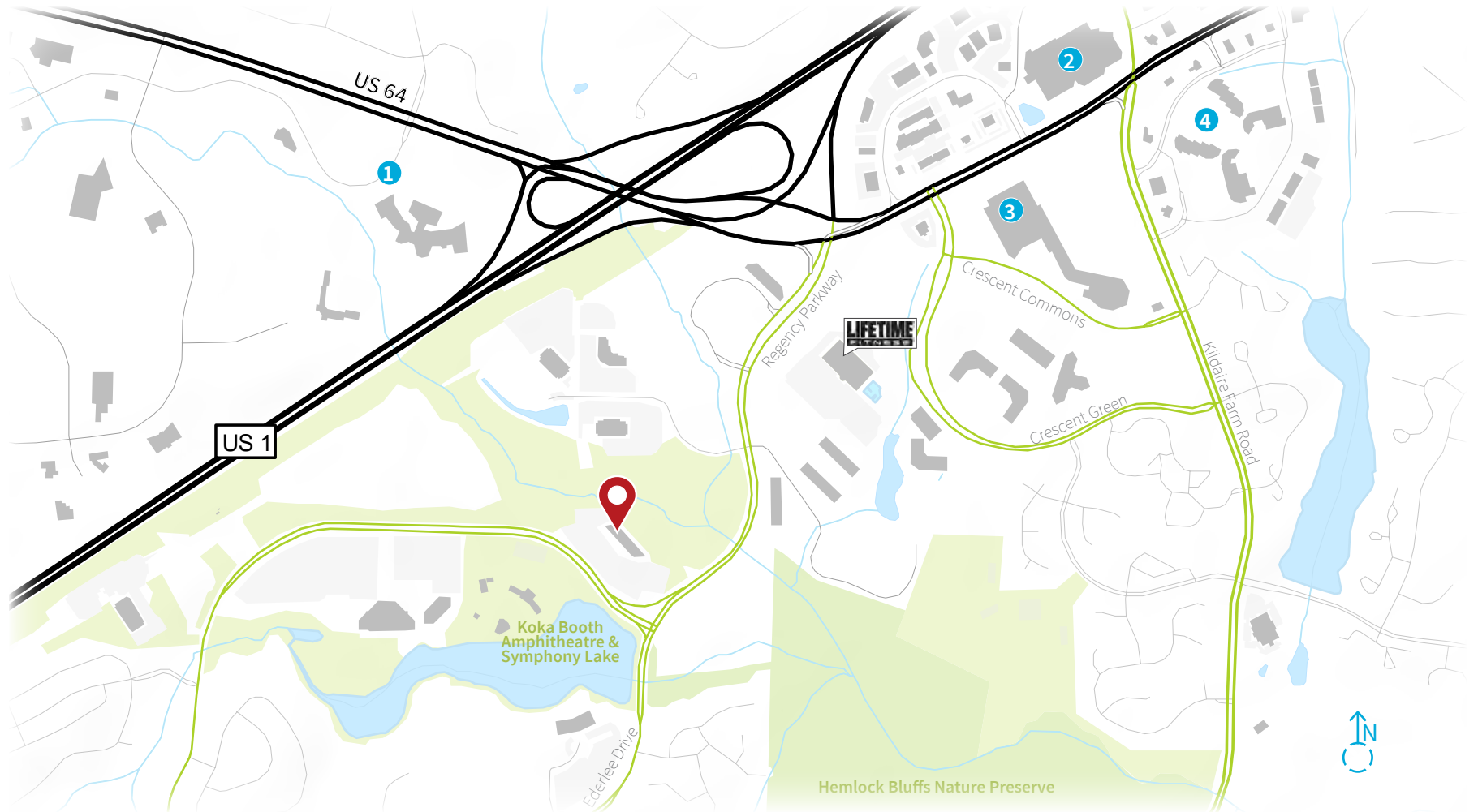
CONTACT



## SIXTH FLOOR

SUITE 675: 7,182 SF





### 1 MacGregor Village

- Bellini
- Cilantro Indian Cafe
- Game On Escapes
- Jimmy V's Steakhouse
- MacGregor Draft House
- Wasabi

### 2 WakeMed

- Departments include but are not limited to:
- Critical Care Services
  - Emergency Department
  - Heart & Vascular Services
  - Pregnancy & Childbirth
  - Surgical Services

### 3 Crescent Commons

- Coastal Federal Credit Union
- Harris Teeter
- Pizza Hut
- Pure Barre
- Starbucks
- Suntrust
- The UPS Store
- Tropical Smoothie
- Walmart

### 4 Waverly Place

- Chick-Fil-A
- Cinebistro
- Corepower Yoga
- Enrigo Italian Bistro
- Famous Toastery
- Gonza Tacos
- Shake Shack
- Taziki's
- Triangle Wine Co.
- V's Barbershop
- Whole Foods





## CARY

Located in close proximity to US-1, 64 and I-440, Cary is a hub for learning, entertainment, education and activity. Recently revamped Downtown Cary hosts concerts in the town square, food truck rodeos and a myriad of unique events most weekends. The Triangle, comprised of neighboring cities Raleigh, Durham and Chapel-Hill, is a diverse economy that includes three tier-1 universities, active local governments, and many of the nation's largest companies.

**39**AVERAGE  
AGE**\$97K**AVG HOUSEHOLD  
INCOME**2.9%**UNEMPLOYMENT  
RATE**65%**POPULATION WITH A  
BACHELOR'S DEGREE  
OR HIGHER

HOME

DETAILS

FLOOR PLANS

MAP

CARY

CONTACT

# RENEWED VISION

[REGENCYPARKCARY.COM](http://REGENCYPARKCARY.COM)



Alidade<sup>®</sup>  
Capital

**CONTACT JLL TO LEARN MORE**

[rduleasing@am.jll.com](mailto:rduleasing@am.jll.com)

+1 919 851 9111

Although information has been obtained from sources deemed reliable, neither Owner nor JLL makes any guarantees, warranties or representations, express or implied, as to the completeness or accuracy as to the information contained herein. Any projections, opinions, assumptions or estimates used are for example only. There may be differences between projected and actual results, and those differences may be material. The Property may be withdrawn without notice. Neither Owner nor JLL accepts any liability for any loss or damage suffered by any party resulting from reliance on this information. If the recipient of this information has signed a confidentiality agreement regarding this matter, this information is subject to the terms of that agreement. ©2019 Jones Lang LaSalle IP, Inc. All rights reserved.