

# 6501 WESTON

OFFICE FOR LEASE  
CARY, NC



**NAI** TRI PROPERTIES



# 6501 WESTON

## DETAILS

Located in Cary's premiere office neighborhood, 6501 Weston Parkway offers abundant nearby amenities including access to 100+ miles of Greenways for walking, running, and biking. Nearby companies include SAS, MetLife, Verizon, Deutsche Bank, Biologics, John Deere and more.

**ADDRESS** 6501 Weston Parkway, Cary NC 27513

**AVAILABLE SPACE** Suite 200 - 32,917 RSF  
Spec Suite 340 - 3,095 RSF, delivery June 2025  
Suite 350 - ~12,500 RSF

**RENTAL RATE** \$28.95, Full Service

**PARKING** 4 per 1,000 square feet

**FEATURES**

- NEW lobby refresh
- NEW alfresco gathering space
- Monument & Building signage available
- Showers on 1<sup>st</sup> floor
- 2 passenger elevators
- Dock high loading dock
- Multi-purpose trails with connection to Lake Crabtree and Umstead State Park
- Amenity-rich environment including Park West Village and The Arboretum at Weston

**CONTACT**  
ROBIN ROSEBERRY ANDERS 919.369.6713 randers@triprop.com  
EMILY PFEIFFER 252.945.9240 epfeiffer@triprop.com

**NAI TRI PROPERTIES**







CONTACT

ROBIN ROSEBERRY ANDERS  
EMILY PFEIFFER

919.369.6713  
252.945.9240

randers@triprop.com  
epfeiffer@triprop.com

**NAI** TRI PROPERTIES

# 6501 WESTON

## SECOND FLOOR

SUITE 200  
32,917 RSF



CLICK OR  
SCAN FOR  
VIRTUAL  
TOUR



### CONTACT

ROBIN ROSEBERRY ANDERS 919.369.6713 randers@triprop.com  
EMILY PFEIFFER 252.945.9240 epfeiffer@triprop.com

**NAI** TRI PROPERTIES

# 6501 WESTON

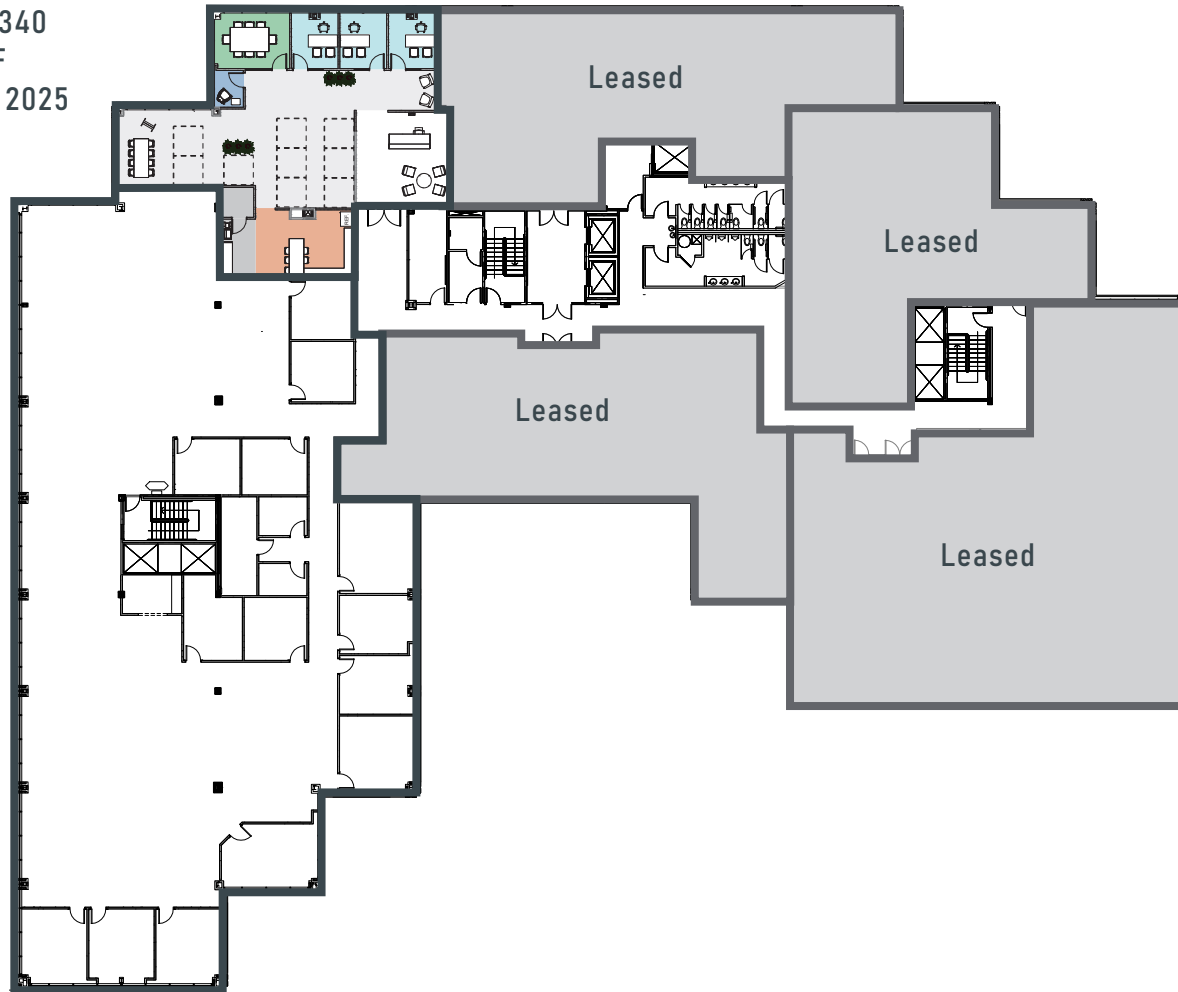
## THIRD FLOOR

SPEC SUITE 340  
3,095 RSF  
Delivery June 2025

SUITE 350  
~12,500 RSF



CLICK OR  
SCAN FOR  
VIRTUAL  
TOUR



### CONTACT

ROBIN ROSEBERRY ANDERS 919.369.6713 randers@triprop.com  
EMILY PFEIFFER 252.945.9240 epfeiffer@triprop.com

# 6501 WESTON

## THIRD FLOOR

SPEC SUITE 340  
3,095 RSF  
Delivery June 2025



**CONTACT**

ROBIN ROSEBERRY ANDERS 919.369.6713 randers@triprop.com  
EMILY PFEIFFER 252.945.9240 epfeiffer@triprop.com





# 6501 WESTON CONNECTIVITY



LAKE CRABTREE COUNTY PARK

NORWELL BLVD

WESTON PARKWAY

6501 WESTON  
PARKWAY



## CONTACT

ROBIN ROSEBERRY ANDERS  
EMILY PFEIFFER

919.369.6713  
252.945.9240

randers@triprop.com  
epfeiffer@triprop.com





# 6501 WESTON

## AMENITIES

### FOOD

Alpaca Peruvian Chicken  
 Another Broken Egg Café  
 B.GOOD  
 Bad Daddy's Burger  
 Blaze Pizza  
 Bottles & Cans Beer & Wine Shop  
 Buffalo Wild Wings  
 CAVA  
 Chili's Grill  
 Chipotle  
 Domino's Pizza  
 Eastern China  
 Firebirds  
 Guasaca  
 Happycakes Cupcakery  
 Hipoke  
 Hot Breads Café  
 Jasmin & Olivz  
 Kilwins Morrisville  
 Los Magueyes, Fajita House  
 Marco's Pizza  
 Meeple's Brew  
 Panera Bread  
 Penn Station East Coast Subs  
 Potbelly Sandwich  
 Rise  
 Ruckus Pizza  
 Smoothie King  
 Starbucks  
 Swagat Indian  
 Taipei Café  
 Wendy's  
 Which Wich  
 Winestore

### SERVICES & SHOPPING

AMC Park Place 16 Cinema  
 Bath & Body Works  
 BB&T  
 Buybuy Baby  
 Carter's  
 Chico's  
 Cosmo Spa and Nails  
 CPR Cell Phone Repair  
 Deluxe Cleaners  
 Faby-lous Hair  
 Home Goods  
 LOFT  
 Massage Envy  
 Michaels  
 Park West Nail Spa  
 Park West Village 14 Cinema  
 PetSmart  
 Post Office  
 Rack Room Shoes  
 Ross Dress For Less  
 Rush Cycle  
 Salon Lofts  
 Scout & Molly's  
 Sola Salon Studios  
 Soma  
 T.J. Maxx  
 Target  
 The UPS Store  
 T-Mobile  
 Ulta Beauty  
 Versona  
 White House Black Market

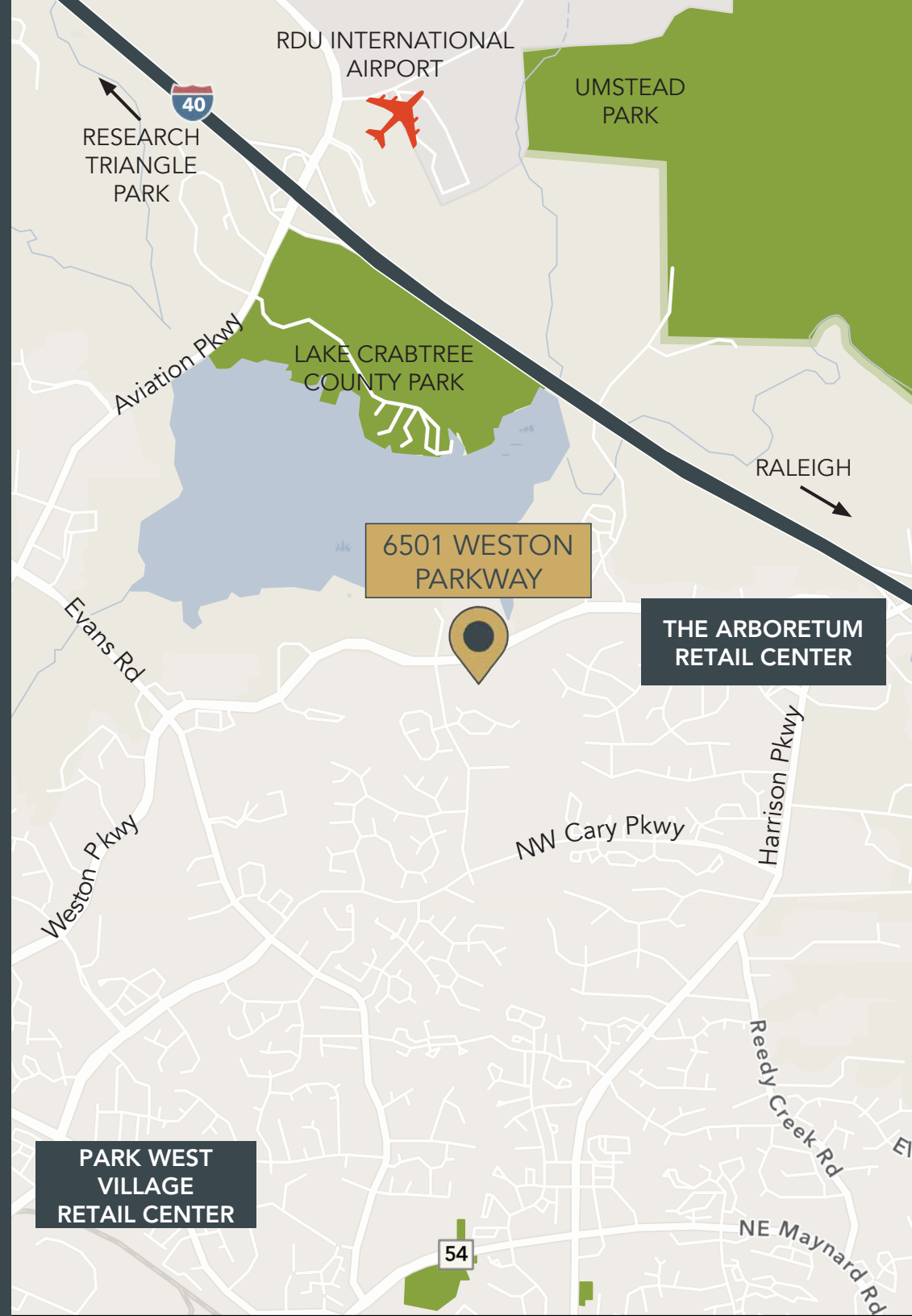
### FITNESS

Excel Body Fitness  
 O2 Fitness  
 Orangetheory Fitness

### CONTACT

ROBIN ROSEBERRY ANDERS 919.369.6713 randers@triprop.com  
 EMILY PFEIFFER 252.945.9240 epfeiffer@triprop.com

**NAI TRI PROPERTIES**





# 6501 WESTON

## THE TRIANGLE AREA

### AIRPORT

RDU International Airport 5.2 Miles

### RESEARCH HUBS & MAJOR UNIVERSITIES

Research Triangle Park 9 Miles  
Duke University 18.1 Miles  
NC State University 8.6 Miles  
UNC Chapel Hill 17.8 Miles  
Centennial Campus 10 Miles

### SURROUNDING AREAS

Morrisville 1.1 Miles  
Downtown Durham 16.4 Miles  
Chapel Hill 21.1 Miles  
Downtown Raleigh 13.5 Miles

### CONTACT

ROBIN ROSEBERRY ANDERS 919.369.6713 randers@triprop.com  
EMILY PFEIFFER 252.945.9240 epfeiffer@triprop.com

**NAI** TRI PROPERTIES

